



Standard configuration: E96×2, E99×2, E70, E71×10  
 High configuration: E96×2, E99×2, E70×2, E71×10, E72×10  
 Compatible tips: E70, E71, E72, E73, E74, E93, E95, E96, E97, E98, E99

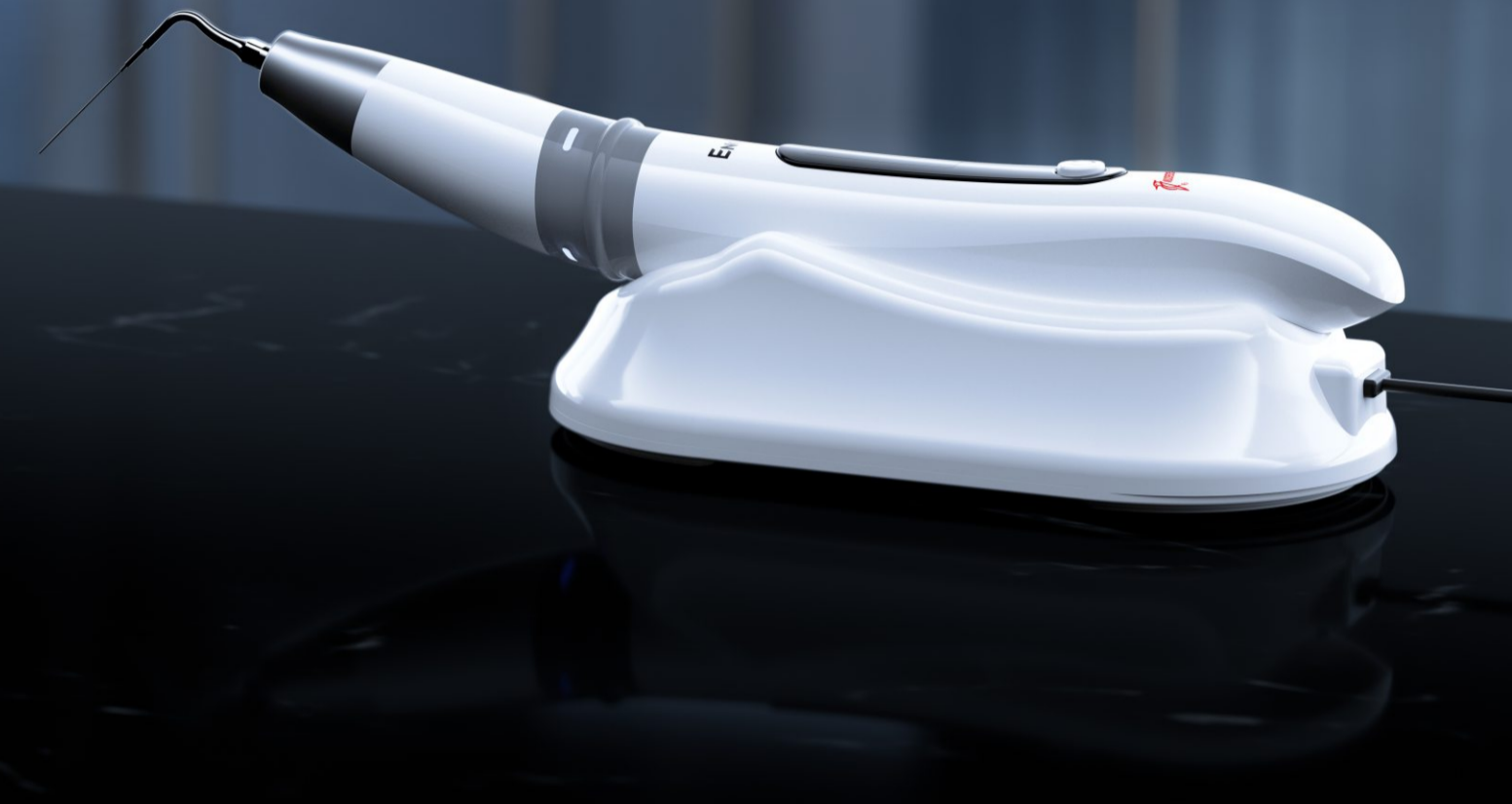
For canal irrigation after the root canal preparation  
 E70: Endochuck, used for install E71, E72, E73 or E74 for root canal cleaning or irrigation  
 E71, E72, E73, E74: Polymer material without cutting ability  
 E93: 20#, taper 1%, tip end length 21.5mm, Ni-Ti  
 E95: 20#, taper 2%, tip end length 18mm, Stainless steel  
 E96: 20#, taper 2%, tip end length 21mm, Stainless steel  
 E97: 20#, taper 2%, tip end length 25mm, Stainless steel  
 E98: 25#, taper 2%, tip end length 18.5mm, Titanium alloy  
 E99: 25#, taper 2%, tip end length 18.5mm, Titanium alloy

Gulin Woodpecker Medical Instrument Co., Ltd.  
 Information Industrial Park, Gulin National High-Tech  
 Zone, Gulin, Guangxi, 541004 P.R. China  
 Sales Dept.: +86-773-5873196/2350599  
 After-sales Service Dept.: 0773-5827898  
 E-mail: woodpecker4@glwoodpecker.com  
 Website: http://www.glwoodpecker.com  
 ZMN-XC-133 V1.0



## Ultrasonic Endo Activate Device Endo 3

• Versatile • Smart • User-friendly



## User-friendly ring switch button

### Three power levels

Three power levels available: E1, E2, E3, power from low to high in order

### Four time modes

Four time modes optional:  
 "10, 15, 20, --"

The working time in the irrigation mode:

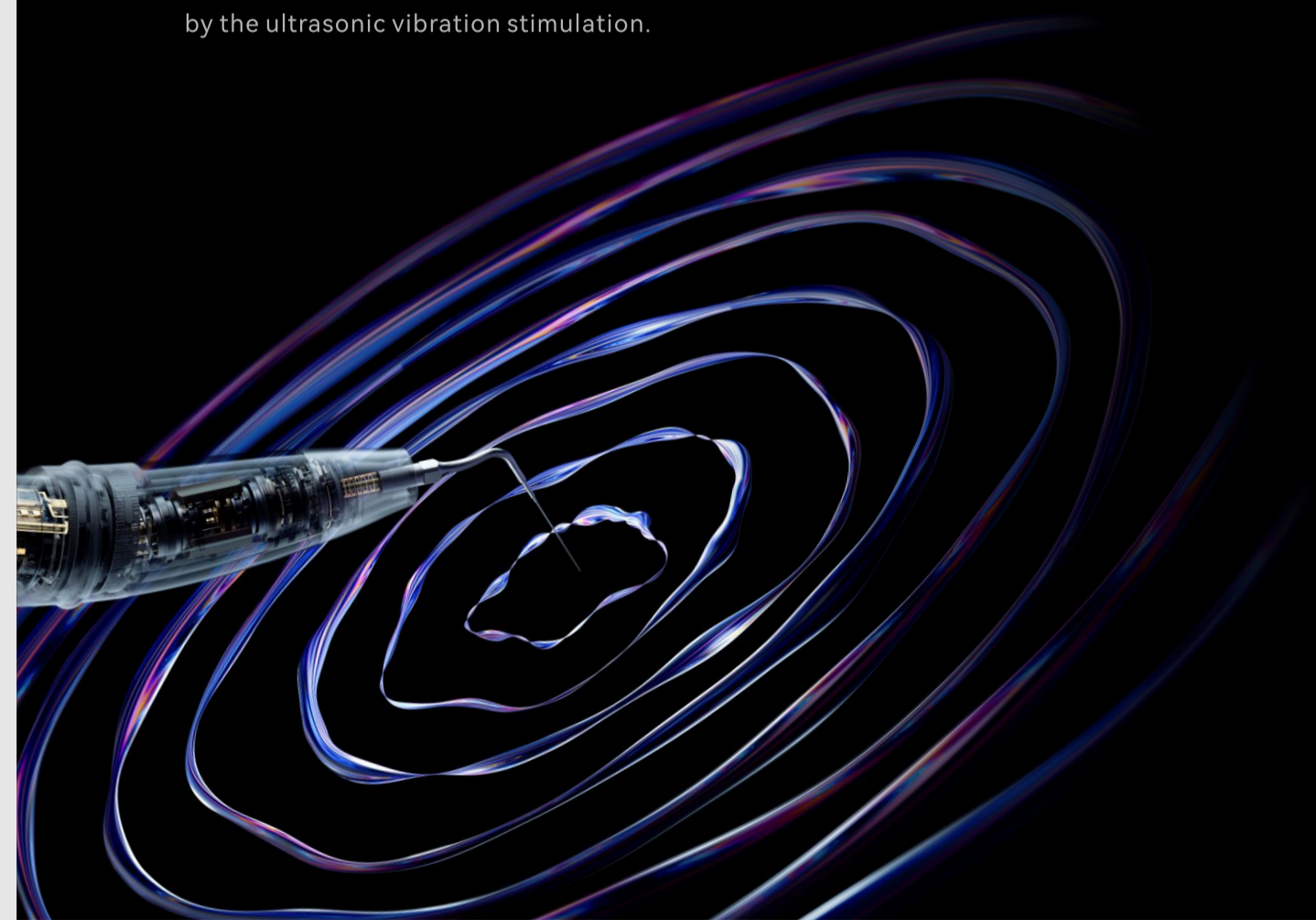
"10s, 15s, 20s, 10min"



## Highly convenient design More efficient irrigation

### Smart microcomputer control

Microcomputer automatic control is adopted. The high-frequency oscillation signal is generated by the high-frequency oscillation circuit and acts on the handpiece head, making the tip resonate by the ultrasonic vibration stimulation.



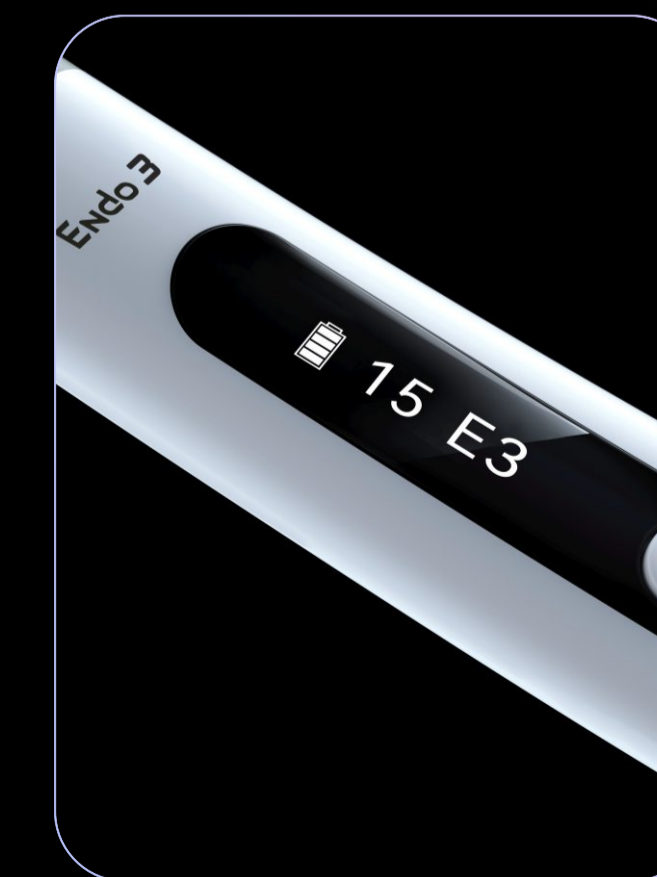
## Wireless control Handy to operate

Magnetic suction contact charging  
 Wireless operation  
 Compact and light, easy for irrigation



## Clear LCD screen Easier observation

Visually display the machine working state



## User-friendly ring switch button

Ring switch button to control the machine  
 Facilitate the treatment of different angles and different tooth positions



## STABLE PERFORMANCE

### Appropriate vibration amplitude

Tips with low vibration and high efficiency  
 More efficient and reliable irrigation

### Stable performance Intelligent tracking

Fully automatic frequency tracking system  
 Automatically search for best working state

